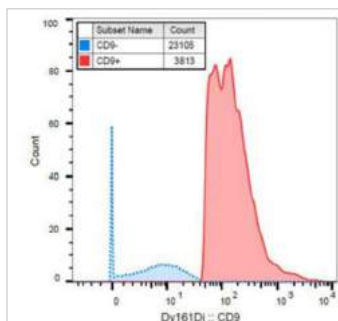


Mass Cytometry Antibodies (CyTOF[®])

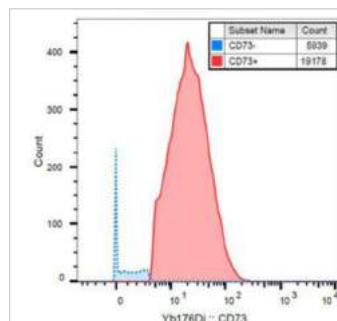
Ver. 01-2021



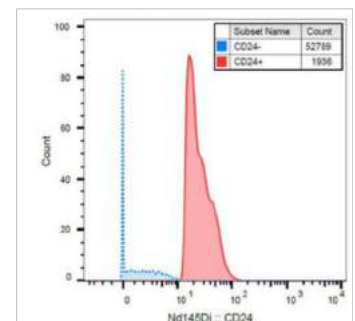
| Antigen | Clone | Host | Isotype | Reactivity |
|--------------|------------|-------|---------|------------------------------|
| CD3 | UCHT1 | Mouse | IgG1 | Human, Primates |
| | MEM-57 | Mouse | IgG2a | Human |
| CD4 | MEM-241 | Mouse | IgG1 | Human |
| CD8 | MEM-31 | Mouse | IgG2a | Human |
| CD9 | MEM-61 | Mouse | IgG1 | Human |
| CD15 | MEM-158 | Mouse | IgM | Human |
| CD24 | SN3 | Mouse | IgG1 | Human |
| CD32 | 3D3 | Mouse | IgG1 | Human |
| CD33 | WM53 | Mouse | IgG1 | Human, Primates |
| CD45RA | MEM-56 | Mouse | IgG2b | Human |
| CD73 | AD2 | Mouse | IgG1 | Human |
| CD99 | 3B2/TA8 | Mouse | IgG2a | Human |
| CD105 | MEM-226 | Mouse | IgG2a | Human, Rat |
| CD116 | 4H1 | Mouse | IgG1 | Human |
| CD271 | NGFR5 | Mouse | IgG1 | Human, Primates, Cat, Rabbit |
| Drebrin | DBN-N-03 | Mouse | IgG2b | Human |
| GCPII / PSMA | GCP-05 | Mouse | IgG1 | Human |
| HLA-Class I | W6/32 | Mouse | IgG2a | Human, Primates, Cat, Cow |
| Lysozyme | LZ598-10G9 | Mouse | IgG1 | Human |



anti-CD9 clone **MEM-61** conjugated with ¹⁶¹Dy



anti-CD73 clone **AD2** conjugated with ¹⁷⁶Yb



anti-CD24 clone **SN3** conjugated with ¹⁴⁵Nd

LabNed.com
exploring possibilities

